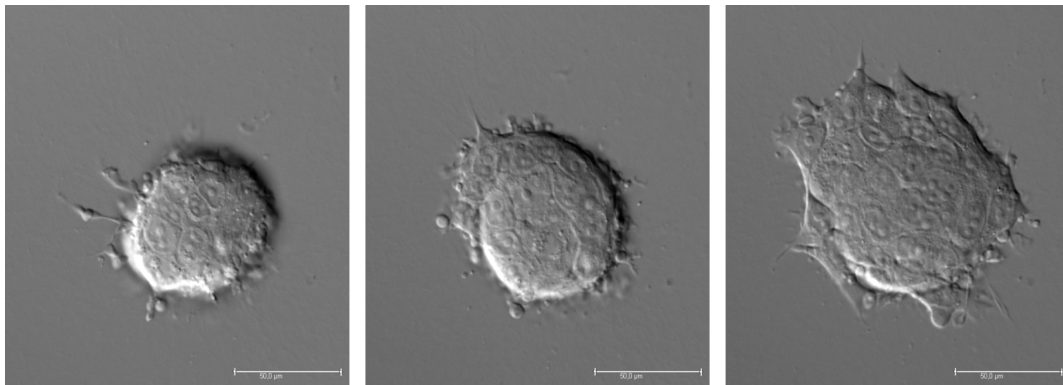


## Lab Session Topic C

### Nanodrugs delivery and anti-tumoral effects on cancer cells: a time-lapse microscopy approach to monitor biological events

#### Introduction

Cancer cell invasion is an essential step for neoplastic progression and metastasis. Consequently, monitoring and finding therapeutic options to target this cellular process is an important objective for cancer researchers. In that sense, time-lapse microscopy can be used as an approach to evaluate the delivery and the in vitro biological activity of nanodrugs in the invasive behavior of cancer cells in 3D model systems.



#### Lab-assistants



Ana Sofia Ribeiro



André Vieira



Joana Paredes

#### Relevant Facilities:

<https://www.ipatimup.pt/Site/LinksOrgUnit.aspx?OrgUnitType=DG000>